

38'  
SINGLES

# BALLMER

2949 sq. ft. { ELEV A } 2923 sq. ft. { ELEV B }  
{ includes 45 sq. ft. finished foyer in basement }



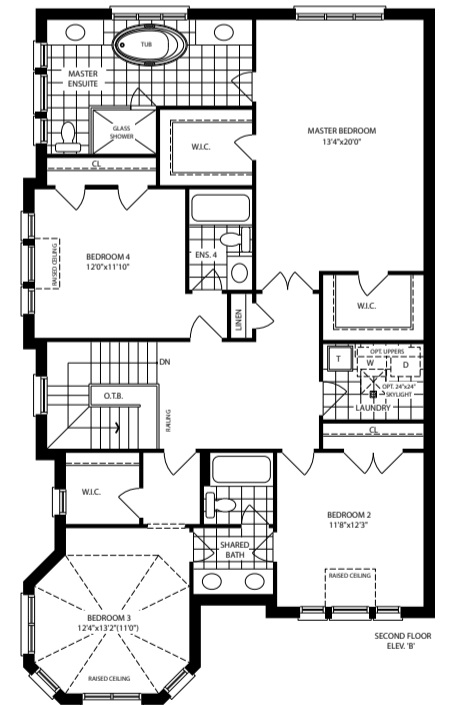
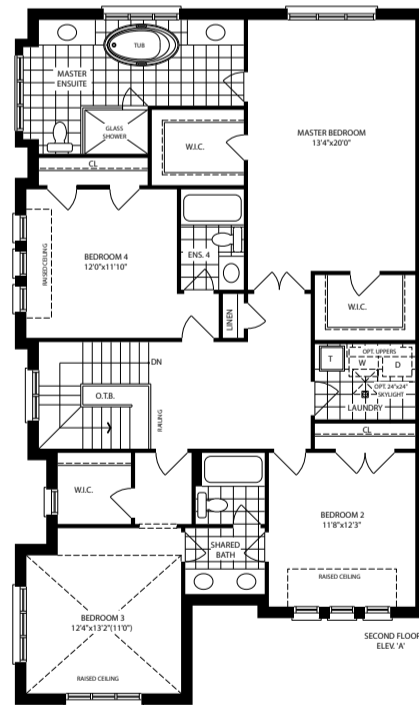
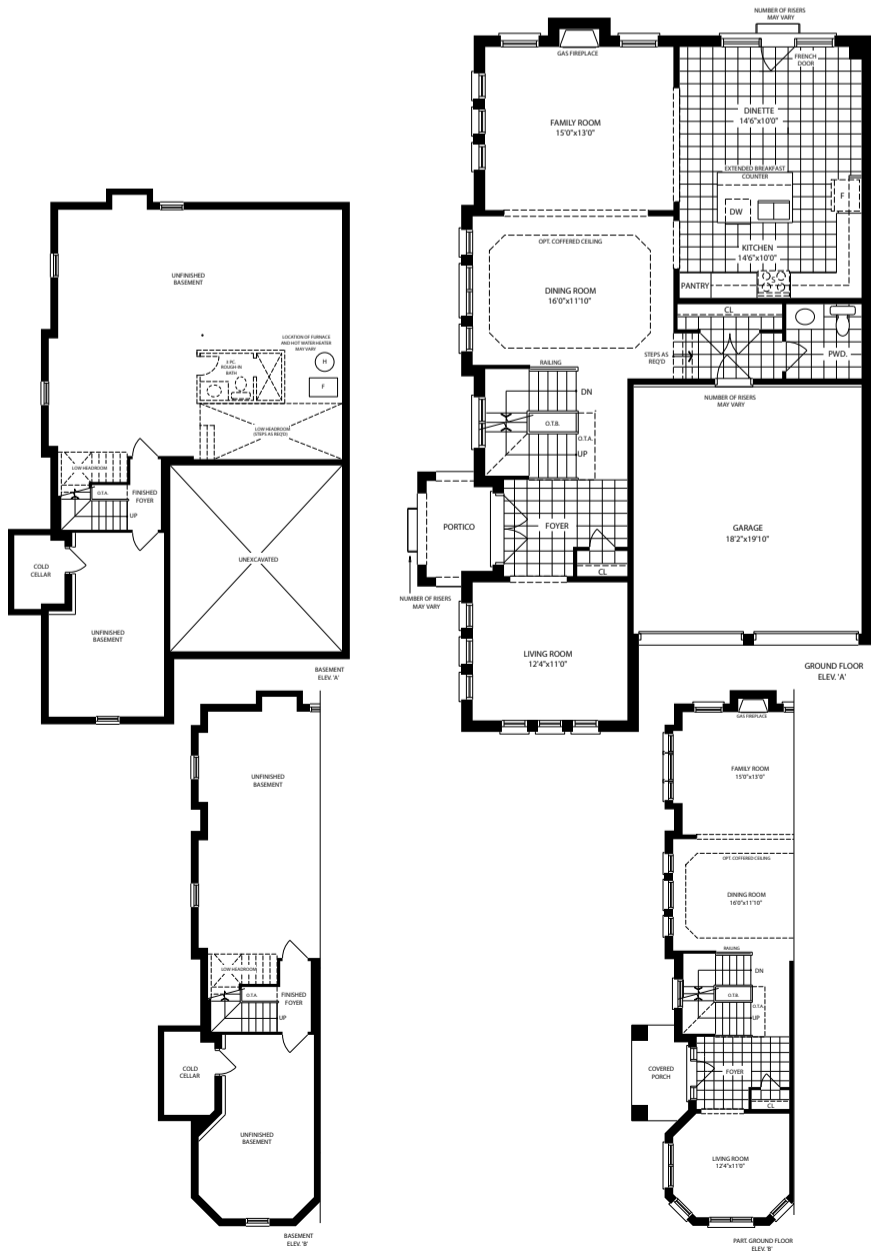
{ ELEV A }



{ ELEV B }

Materials, specifications, and floor plans are subject to change without notice. All house renderings are artist's conceptions. All floor plans are approximate dimensions. Actual usable floor space may vary from the stated floor area. E.&O.E. 3806 CORNER

**Fernbrook  
HOMES**



# BALLMER

2949 sq. ft. { ELEV A } 2923 sq. ft. { ELEV B }  
{ includes 45 sq. ft. finished foyer in basement }

Materials, specifications, and floor plans are subject to change without notice. All house renderings are artist's conceptions. All floor plans are approximate dimensions. Actual usable floor space may vary from the stated floor area. E.&O.E. 3806 CORNER

**Fernbrook  
HOMES**